



**ESSEX NORTH SHORE**  
AGRICULTURAL & TECHNICAL SCHOOL DISTRICT



## **Larkin Cottage Buy A Brick Fundraiser Campaign**

Essex North Shore Agricultural and Technical School in collaboration with the Essex Aggie Alumni Association is sponsoring a “Buy A Brick” fundraiser campaign to support a rebuild of the Catherine Larkin Memorial Practice Cottage on the Essex North Shore Agricultural and Technical School campus. Second only to Smith Hall, Larkin Cottage is the oldest building still standing on the South Campus. Built in 1950, Larkin Cottage was used for many years as a practice cottage for the Essex Agricultural Homemaking School.

The new Larkin Cottage will serve as a multi-use facility, complete with service kitchen, office space, and an exhibit hall, to be used as both a learning lab and function space. The new building will be able to hold up to 150 guests for meetings and functions.

Funds to finance the Larkin Cottage rebuild will be supplied by grants as well as private and corporate sponsors. When you purchase a brick your generous gift will allow Essex North Shore Agricultural and Technical School to help finance the rebuild and give a new life to Larkin Cottage.

The brick walkway and patios surrounding the cottage will be installed by students and staff at Essex North Shore Agricultural and Technical School. Each brick will feature an engraved inscription of the donor’s choice. Relatives of deceased graduates can purchase a memorial brick to honor family members. This is your chance to be remembered for generations to come by leaving your mark on our beautiful campus.



Catherine M. Larkin Memorial Practice Cottage

## *Larkin Cottage Project Outline*

### *Purpose of the expansion of the Larkin Cottage:*

- Learning space for Essex North Shore Agricultural and Technical School students
- To be built by students
- Agricultural museum to showcase key artifacts from agricultural education on the North Shore and events sponsored by the alumni association
- Community meeting space to hold events evenings and weekends
- Expanded use of North and South Campus for student learning

### *Thoughts for the Larkin Cottage (2 year timeframe):*

- School Committee was made aware of basic thoughts to determine best use for Larkin Cottage
- School Committee would approve the moving forward of this project when conceptual drawings are complete and rough estimate costs are determined
- Conceptual drawings to determine estimated construction costs
- Students would use this as their "house building" project
- Expand the existing footprint to include large open area with stone fireplace
- Build wrap around porch with entrance points at various locations
- Full kitchen to cook, heat, and serve food
- Two office areas with availability to increase office space based on demand
- ADA compliance, no elevator needed as it is ground level
- Vaulted ceilings
- Gardens to be planted including a pathway to Smith Hall
- Outdoor area which would allow for outdoor events

### *Funding:*

- Operational budget for building materials and construction costs
- Fundraising campaign
- Engraved brick selling
- Donations of goods and services from outside sources

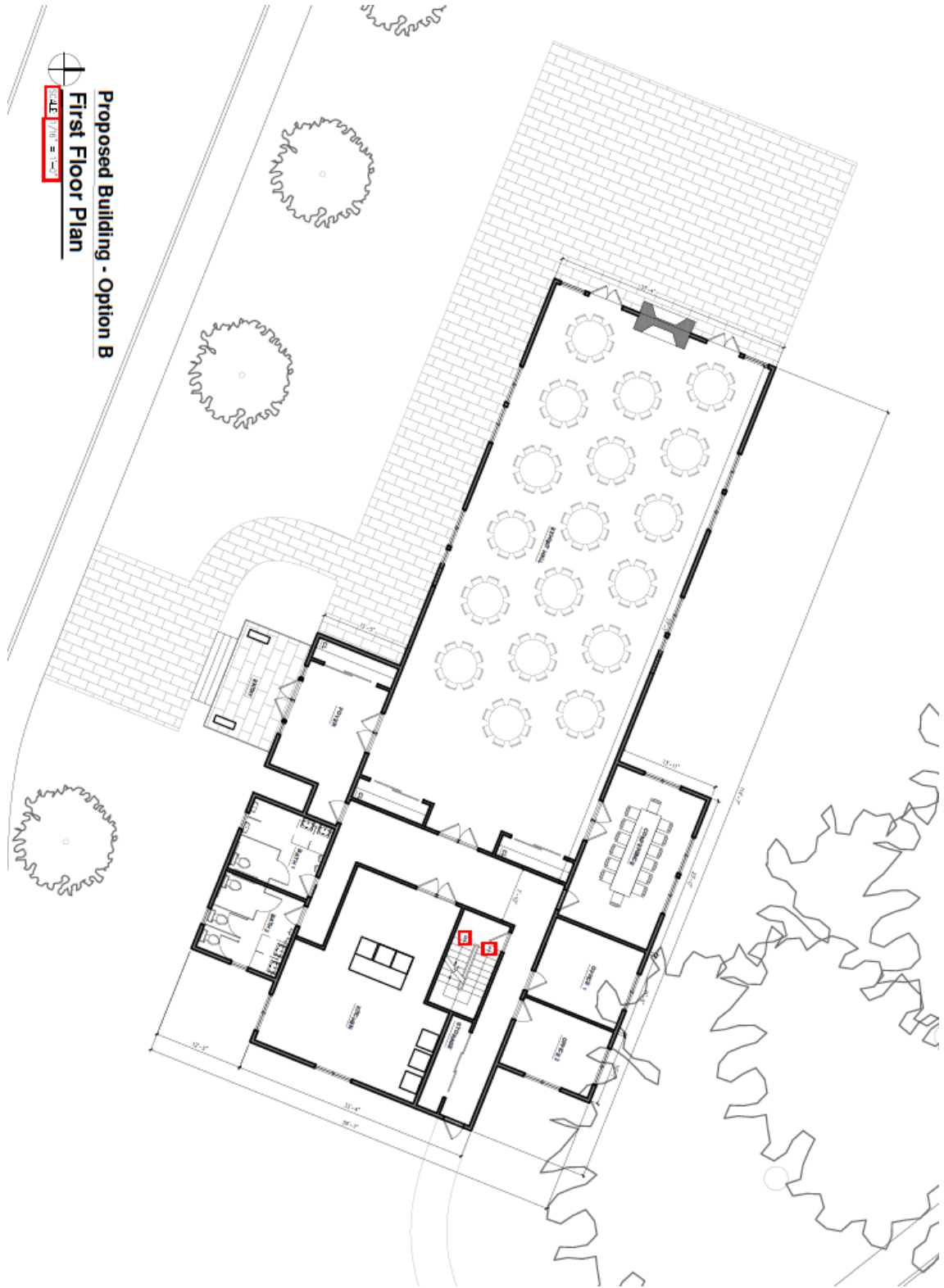
## **About Catherine Larkin**

Born on January 21, 1915, in Salem, MA, Catherine Larkin attended the Essex County Homemaking School of Hathorne, later graduating from the Salem Hospital Training School for nurses. She was further trained in hospitals in Providence and Salem. She joined the Army Nurse Corps. Sadly, while serving our country, Ms. Larkin died in a plane crash. Her family funded the building of this cottage in her memory to be used by students at the Homemaking School.

**All supporters are invited to join us in this endeavor:**

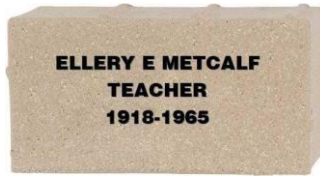
**Essex North Shore Agricultural and Technical School and the Essex Aggie Alumni Association  
Alumni - Faculty and Retirees - Friends and Supporters - Business and Organizations**

# Larkin Cottage Conceptual Drawing 2



Proposed Building - Option B  
First Floor Plan  
SCALE: 1/8" = 1'-0"

# Larkin Cottage Buy A Brick Fundraiser Order Form



Alumni

Faculty & Retirees

Friends & Supporters

Business & Organizations

**The first 1,000 bricks purchased will provide an additional \$10.00 Matching Gift donation**

Donor Name: \_\_\_\_\_  
 Address: \_\_\_\_\_  
 City: \_\_\_\_\_ State: \_\_\_\_\_ Zip: \_\_\_\_\_  
 Phone: \_\_\_\_\_ Email: \_\_\_\_\_

Engraved brick: (4x8) \$100/ea. \$ \_\_\_\_\_  
 Engraved brick: (8x8) \$200/ea. \$ \_\_\_\_\_  
 Replica brick: (4x8) \$100/ea. \$ \_\_\_\_\_ (engraved brick with rubber feet for display - includes shipping)

Additional donation to help with financing for the Larkin Cottage rebuild \$ \_\_\_\_\_

Total Amount Enclosed: \$ \_\_\_\_\_

**PLEASE PRINT CLEARLY (All capital letters, automatically centered)**

4x8 brick - \$100.00 each - 1 to 3 lines of inscription - 18 characters per line (including spaces and punctuation)


8x8 brick - \$200.00 each - 1 to 6 lines of inscription - 18 characters per line (including spaces and punctuation)


**Make checks payable to: Essex Aggie Alumni Association**  
**Mail form and check to: ENSATS, c/o Charles Main, 643 Main Rd, Phippsburg, ME 04562**

To place your order online and pay by credit card, visit: <https://thatsmybrick.com/essexaggieaa>

<https://essexaggie.org/alumni/alumni.html> E-MAIL: [cmain@comcast.net](mailto:cmain@comcast.net)  
 Essex Aggie Alumni Association is a 501(c)3 organization and donations are tax deductible